

TOWNSTREET

IN "O" GAUGE

Made in Cumbria
by Pat Lockley

7th Edition



One version of the Townstreet Stone Station. The realism is truly amazing and every detail is included in each main wall or gable casting, making for a very easy assembly. Not just drainpipes and door handles, look closer & you will see the window catches too.

Price £2

BRING REALISM TO YOUR LAYOUT WITH THESE
HAND CRAFTED STONE CAST ORIGINALS



TOWNSTREET
6 Kirkhill, Blencarn
nr Penrith, Cumbria CA10 1TZ
Tel. MON to FRI 2-8pm 01768 88456



TOWNSTREET

MODEL ARCHITECTURE AT ITS FINEST

CAST IN REAL STONE POWDERS FOR REALISM

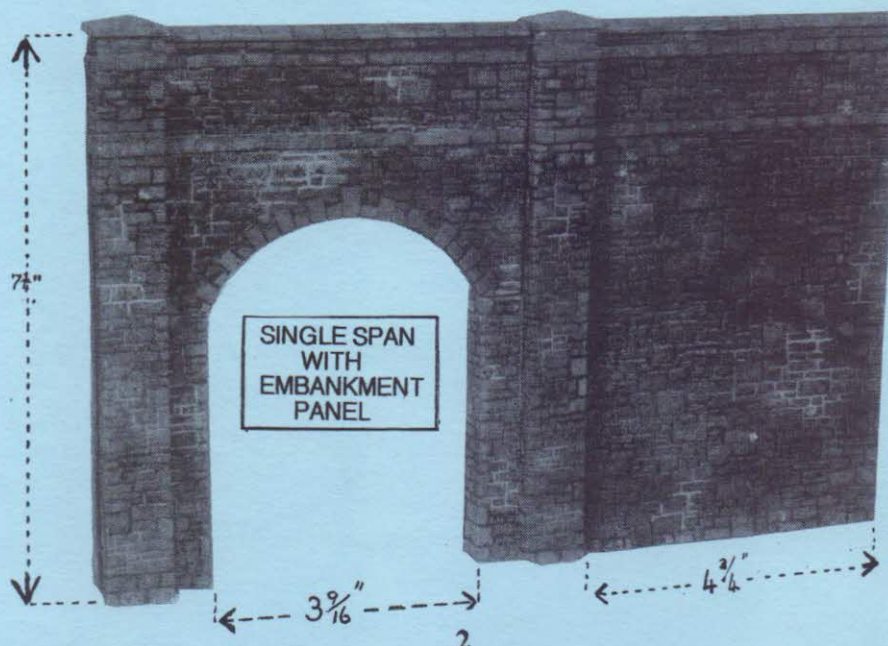
In Townstreet's book realism doesn't mean having etched Midland window frames or G.W.R. style canopy on a cardboard box covered with brick paper. It means having buildings that look as if they were made from stone or brick and every stone (even under magnification) looking like real stone. This is achieved through hand made castings from hand carved originals with tremendous depth and detail and absolutely no concessions whatsoever to machine manufacture. Each main casting has all the interesting architectural features of the real thing and where required doors, windows, drainpipes and other details are in the casting saving considerable time on assembly.

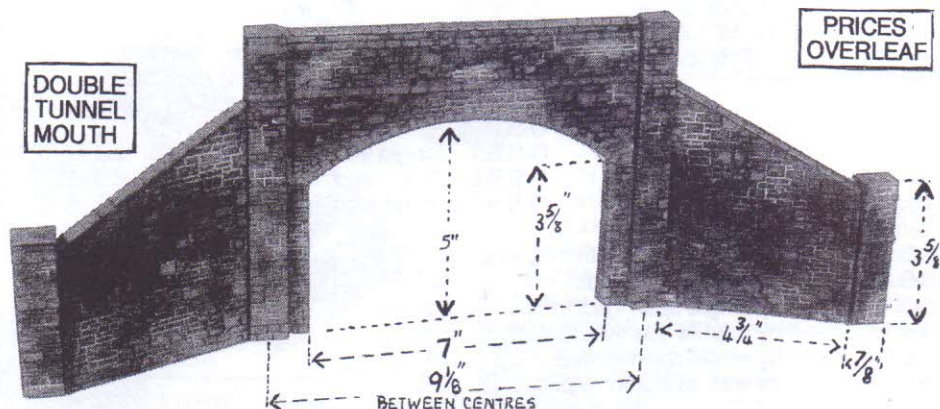
The "Chrystacast" material (very hard stone plaster) they are cast in reproduces the texture of stone or brick scaled down and its absorbent nature makes colouring very much easier than other materials. Simply following the instructions supplied will really give you stones that look like stones and brick like brick on your layout. If you are the chap, about to tell me he can't paint try it and you will most likely find out that you can.

There are many useful structures in the range with always more to come. In addition one-offs and simple modifications can extend the range even further so if you don't see just what you need in this booklet please give me a ring and let me know your requirements.

If you feel it is high time you developed the scenic or structural aspect of your layout to provide a realistic setting for your best weathered locos and rolling stock why not give Townstreet a try. You won't be disappointed.

STONE BRIDGE, TUNNEL MOUTH & VIADUCT CASTINGS AVAILABLE AS SETS OR INDIVIDUAL PIECES ALLOW YOU TO BUILD THE STRUCTURE YOU REQUIRE





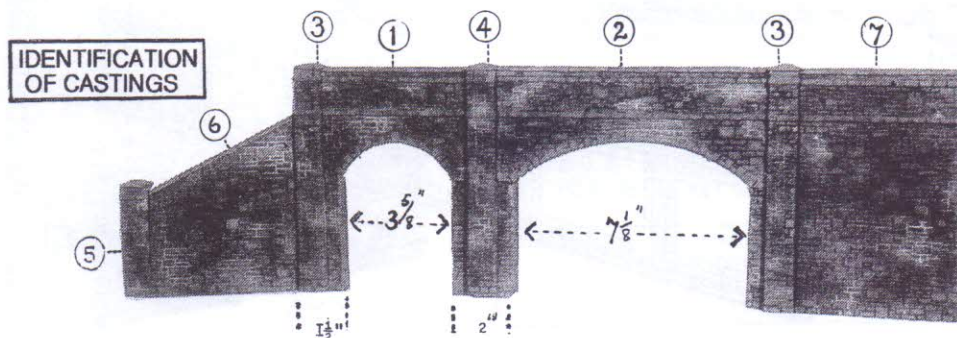
Townstreet produce a Bridge/Tunnel Mouth/Viaduct system which allows you to build a variety of structures using the matching spans, pillars and wall castings. A superbly authentic rough stone has been developed for this range which is finished off with all the copings and pillar cappings in a smooth dressed stone.

A Tunnel Mouth set as illustrated (7 pieces) provides all the stonework required to build one tunnel mouth "face". Two sets can be linked with internal stonework to make a complete three dimensional road/rail bridge and parapets with stone effect on the back are supplied for this application. You can also specify additional stonework for inside a tunnel entrance where this is seen.

Similarly the basic Viaduct set or Embankment Wall set provide facings for one side only and two sets (plus additional stone panels for the viaduct) are required to make a complete structure. All parts can be ordered individually to allow you to build exactly to the requirements on your own layout and if you have difficulty working out which parts you need please just phone for assistance.

If you wish to complete any of these structures with the inside arched stonework this can be made for you if specified.

ONLY REAL STONE LOOKS THIS REALISTIC
EASY TO USE P.V.A. GLUE TO ASSEMBLE
SIMPLE COLOURING IN INSTRUCTIONS



**STONE BRIDGE
COMPONENT
PRICES**

O.S.B.1.	Single track span or arch.....	£5.95.
O.S.B.2.	Double track span or arch.....	£6.95.
O.S.B.3.	Pair main pillars, R & L handed.....	£7.50.
O.S.B.4.	Single linking Pillar, 2 shoulders.....	£3.95.
O.S.B.5.	Pair small end pillars, R & L handed.....	£3.95.
O.S.B.6.	Pair, sloping side wings R & L.....	£7.50.
O.S.B.7.	Single level top embank. wall section.....	£4.95.
O.S.B.8.	Pillar, no shoulders to link O.S.B.7s.....	£3.50.
O.S.B.9.	"Blind arch" Infill panel for O.S.B.1.....	£2.95.

O.S.B.10.	Single track Tunnel Mouth, 7 piece.....	£24.50.
O.S.B.11.	Double track Tunnel Mouth.....	£25.50.
O.S.B.12.	Three by single span viaduct.....	£32.95.
O.S.B.13.	Three by double span viaduct.....	£35.95.
O.S.B.14.	Three by single span infilled.....	£41.50.
O.S.B.15.	Three by wall sections / 4xpillars.....	£28.50.

These sets are 1 side, facings only. complete structures require 2 sets +rear detailing & additional pieces.

SET PRICES

NOTE. Please specify when stone detail on back face of parapet is required.

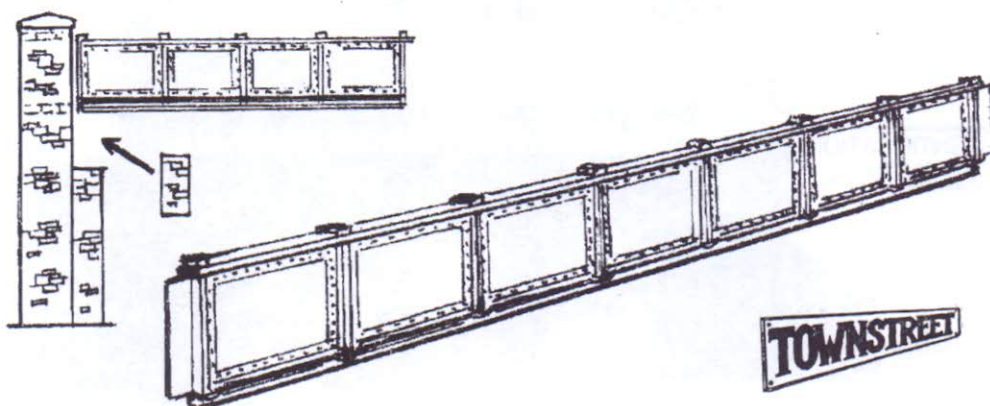
PLEASE ADD £6.00. POST & PACKING TO EACH ORDER. (UK.)

International orders at cost of Airmail.

GIRDER BRIDGE

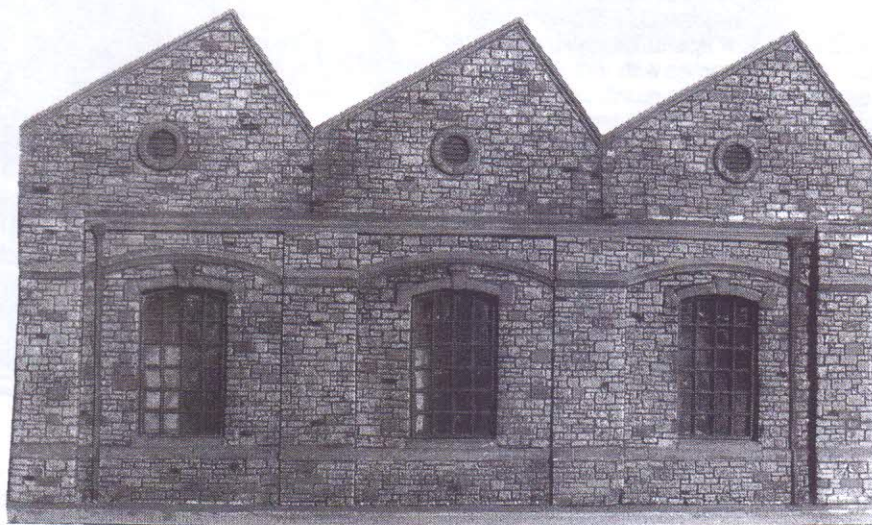
A Plate Girder Bridge side has been produced for a project on my own layout. It is just over 8" long, 1" deep and the one piece casting depicts seven rectangular panels separated by upright stanchions with the usual rivet detail on each panel. Designed to be suitable for 4 or 7mm. scale the span can be used with brick or stone supports of your own choice and making or mounted on the Townstreet O.S.B.3. Stone Bridge Pillars. As these are designed to support the deeper stone arch castings extra pieces of stone to build up the buttresses will be provided with the pillars when they are supplied with the iron bridge side. This casting is produced in resin as it would be too easily broken in stone cast plaster. There is no detail on the back of the casting.

Plate Girder Bridge Side in Resin (1 side).....£7.95.



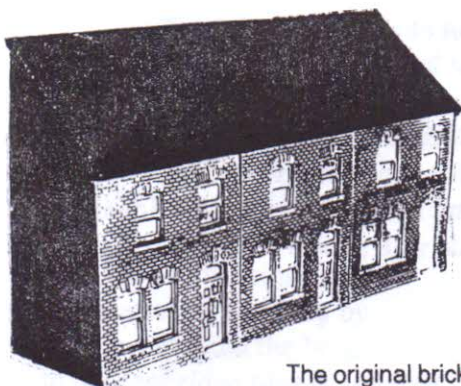
LOW RELIEF FACTORY

This model was inspired by the layout of the editor of a certain popular railway model magazine who had used the side wall from our engine shed to make a low relief factory unit. If you can't beat them, join them! The kit is easy to build and consists of 9 castings and 3 resin windows. The dimensions are depth (minimum) 65 mm, length 350mm and height 205mm. Additional roof panels (OR1 and OSR1) and side wall panels can be purchased separately if more depth is required.



Price £45

BRICK HOUSEFRONT



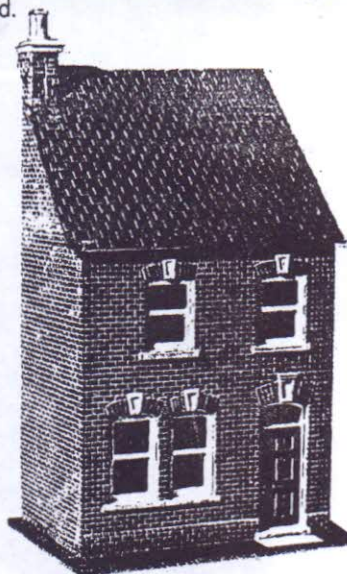
The original brick housefront had solid cast windows and is still available to order. The new O.B.16. casting has proper window apertures which you can "glaze" and also comes with Victorian Iron guttering. (Downpipes are still left to you). A set of 3 with gables, roofs and chimneys in half relief is £57.50. and makes up into an interesting and realistic street scene.

Not good at painting See Back page for reassurance

The brick housefront is 4¾" wide by 5¼" high to gutter level.

PRICES ON PAGE 15.

A traditional brick house seen all over the country with detailed brickwork, doors and realistic sash & case windows all moulded in a single housefront casting. This saves much time in construction and clear sharp moulding makes for easy painting and a finished model of a very high standard. This realistic casting is best used to make a small terrace of 2 to 4 houses with gables from the matching brick panels, roofs from slate panels and the matching brick chimney. Drainpipes have deliberately been left off as this allows you to fit them over the joins and gables and roofs can be supplied ready cut if required.



The Water Tower and Thatch Cottage components are not listed individually as virtually every user will use the "set" for these. If you are the exception and require some of the parts of these models for another application please just phone for prices

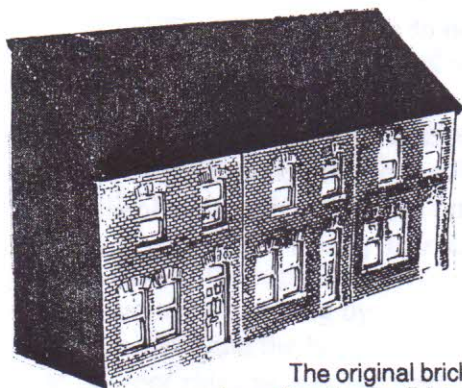
THATCHED COTTAGE

The small two storey Cottage with Thatched roof is roughly based on New Forest buildings with rendered walls. The Thatch colour washes to give a good impression of this type of roof and cast in window apertures allow lighting or even interior detail to be added. The castings are accurate for 7mm scale but represent a small low ceilinged cottage. It could look underscale if used too close to large railway structures but can really set the scene in an appropriate rural setting. The roof is cast in two halves which may need a little "matching up" but is also suitable for low relief "half" buildings where space is limited

Thatched Cottage.....£39.50.

Please add £6.00. P & P.

BRICK HOUSEFRONT



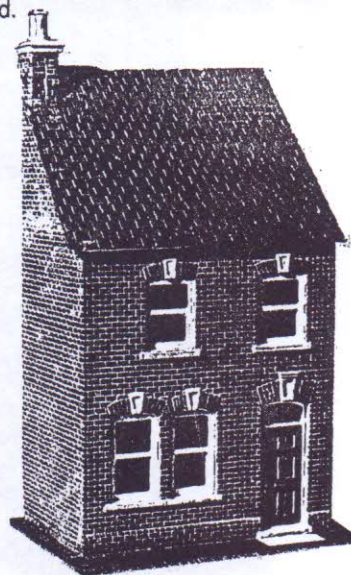
The original brick housefront had solid cast windows and is still available to order. The new O.B.16. casting has proper window apertures which you can "glaze" and also comes with Victorian Iron guttering. (Downpipes are still left to you). A set of 3 with gables, roofs and chimneys in half relief is £57.50. and makes up into an interesting and realistic street scene.

Not good at painting See Back page for reassurance

The brick housefront is 4¾" wide by 5¼" high to gutter level.

PRICES ON PAGE 15.

A traditional brick house seen all over the country with detailed brickwork, doors and realistic sash & case windows all moulded in a single housefront casting. This saves much time in construction and clear sharp moulding makes for easy painting and a finished model of a very high standard. This realistic casting is best used to make a small terrace of 2 to 4 houses with gables from the matching brick panels, roofs from slate panels and the matching brick chimney. Drainpipes have deliberately been left off as this allows you to fit them over the joins and gables and roofs can be supplied ready cut if required.



The Water Tower and Thatch Cottage components are not listed individually as virtually every user will use the "set" for these. If you are the exception and require some of the parts of these models for another application please just phone for prices

THATCHED COTTAGE

The small two storey Cottage with Thatched roof is roughly based on New Forest buildings with rendered walls. The Thatch colour washes to give a good impression of this type of roof and cast in window apertures allow lighting or even interior detail to be added. The castings are accurate for 7mm scale but represent a small low ceilinged cottage. It could look underscale if used too close to large railway structures but can really set the scene in an appropriate rural setting. The roof is cast in two halves which may need a little "matching up" but is also suitable for low relief "half" buildings where space is limited

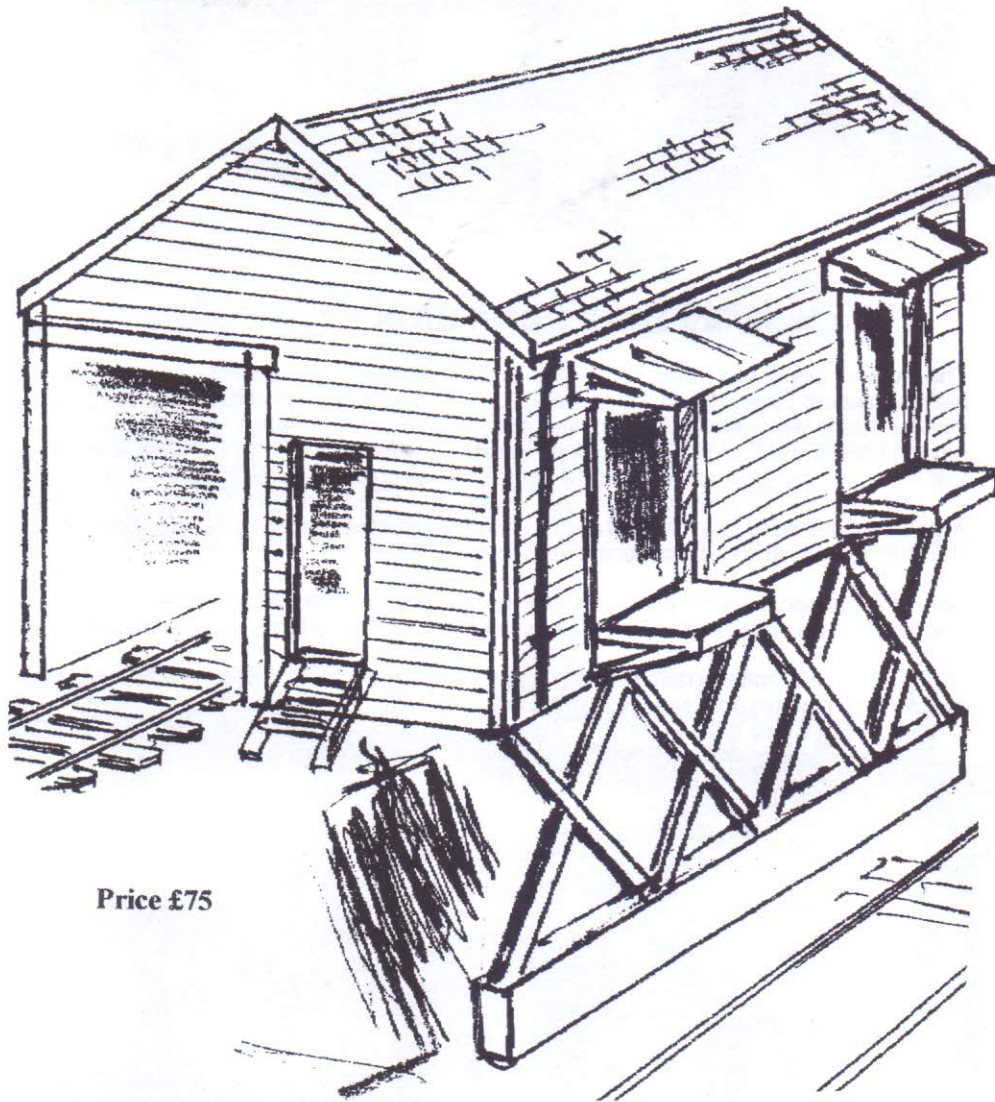
Thatched Cottage.....£39.50.

Please add £6.00. P & P.

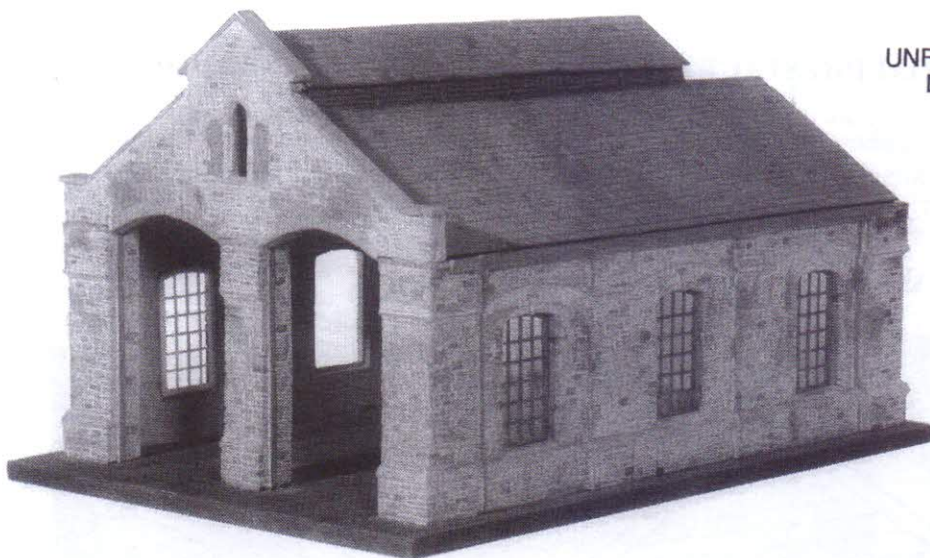
COALING STAGE

A coaling stage is under development and should be available by the 2006 Telford show. It will be 215mm long, 152mm wide and maximum height will be 280mm.

A sketch of the model is detailed below.



Price £75



UNFINISHED
DEMO
MODEL

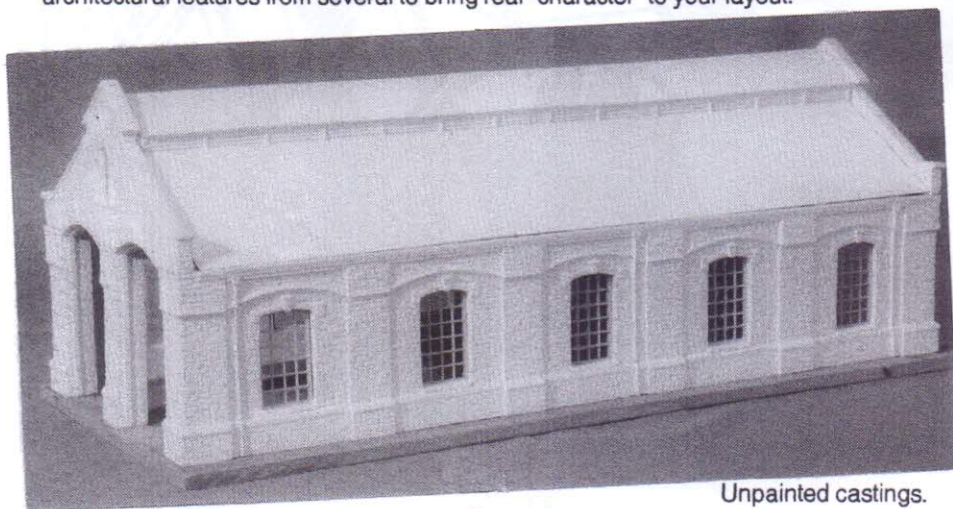
THE TOWNSTREET STONE CAST STONE ENGINE SHED

The modular design with some of the most realistic stonework you could see on a model makes a superb Engine Shed. Large stone castings colour and assemble easily and the smaller details like drainpipes and gutters are moulded on the castings so you do not have to handle small fiddly parts. A standard two road shed is 14" long, 9½" wide and 8½" high. This can be added to with 8½" long modules creating sheds at 22½", 31" etc.

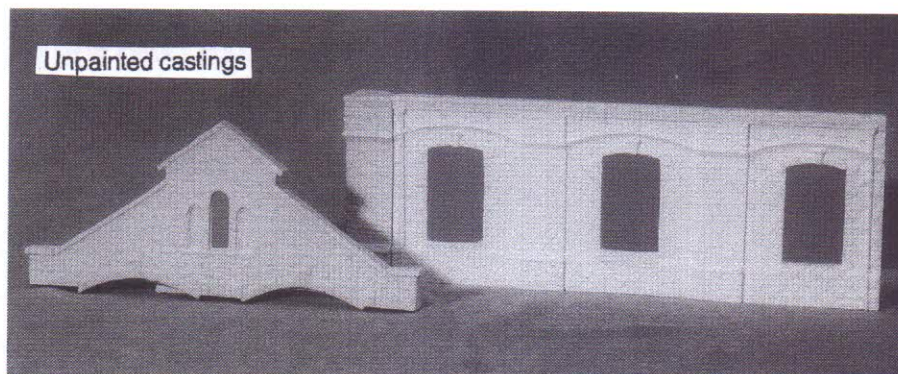
A single road shed is also planned and "in between" lengths can be made by cutting the standard wall lengths and roof panels to suit.

Doors for this model are not planned immediately as they are frequently not seen on the real thing but we would appreciate your comments if you thought they were necessary.

Not based on any specific real shed this model incorporates some of the most interesting architectural features from several to bring real "character" to your layout.



Unpainted castings.



STONE ENGINE SHED (COMPL.) Std.2 ROAD 14" LONG VERSION.....£99.50.
WALLS & ROOFS SET TO ADD 8½" EXTRA TO LENGTH.....£40.00.

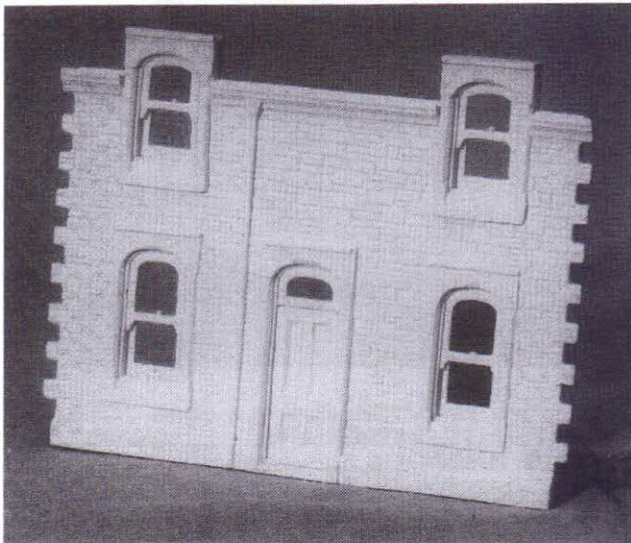
All components can be purchased separately for scratchbuilding, individual modifications or for low or half relief construction against the backscene.

O.E.S.1. Main side wall 11¾" long with 3 x bays / window apertures.....£11.95.
 O.E.S.2. Add on side wall 8½" long, 2 x bay.....£10.50.
 O.E.S.3. Pair of end pillar / buttress to complete wall / walls, one side.....£7.90.
 O.E.S.4. Centre pillar, centre support for gable end.....£3.50.
 O.E.S.5. Gable end.....£11.95.
 O.E.S.6. Stone curved top infill panel to close off "doorways" in rear gable.....£3.95.

O.S.R.6. Main slate roof panel to match 3 bay wall.....£5.95.
 O.S.R.7. Slate roof top with vent to fit above O.S.R.6.....£5.95.
 O.S.R.8. Extension roof panel to match 2 bay wall.....£4.50.
 O.S.R.9. Extension top with vent to fit above O.S.R.8.....£4.50.

Resin windows incl. with sets, purchase separately with individual wall panels.....£1.00.





**STONE
HOUSE
FRONT**

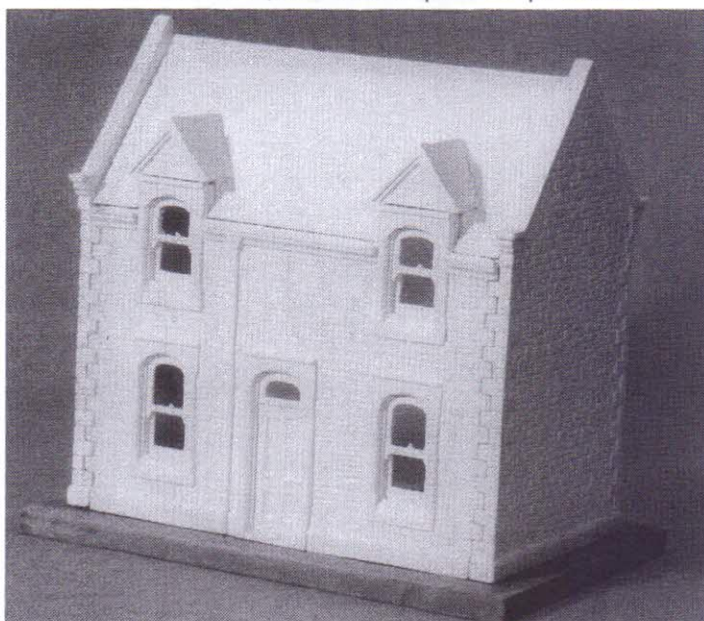
Another useful new casting lets you build a stone farmhouse or add a stationmasters house to any version of the station with the plain 2 storey wall on one end. The one piece house front wall casting has complete detail down to the drainpipe and must be used with the matching roof to fit over the upper windows. It fits station gables which are available with or without windows to build a single wing building or replaces the plain wall in the appropriate set of station components.

O.S.S.16. 2 storey wall with door & windows.....£10.95.

O.S.R.10. roof panel with dormer tops for windows....£4.95.

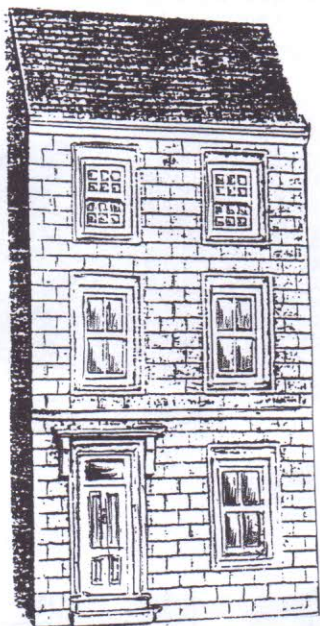
FARMHOUSE, plain back wall and gables.....£49.50.

Stationmasters house, add to station price.....plus..£ 3.00.



**STONE
HOUSE
IN
UNPAINTED
CASTINGS**

STONE 3 STOREY HOUSEFRONT



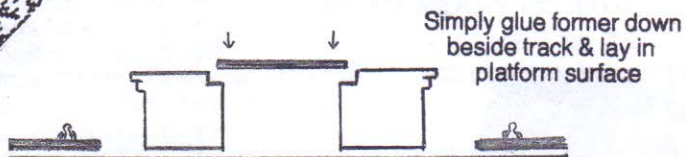
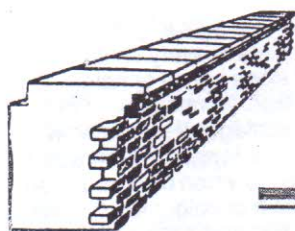
These castings, complete in every detail represent a "quality" stone house or hotel / boarding house frontage. Normally seen in "terraces" of several frontages they make an imposing backscene to a layout and are typical to any area of the country when coloured in an appropriate stone colour or colour wash. Cast as a ground floor section and a separate upper two floors gives easy building and allows scope for variety if you wish to substitute a section.



The stone 3 storey housefront is 5½" wide x 9" high to gutter level.
2½ UNITS ILLUSTRATED HERE



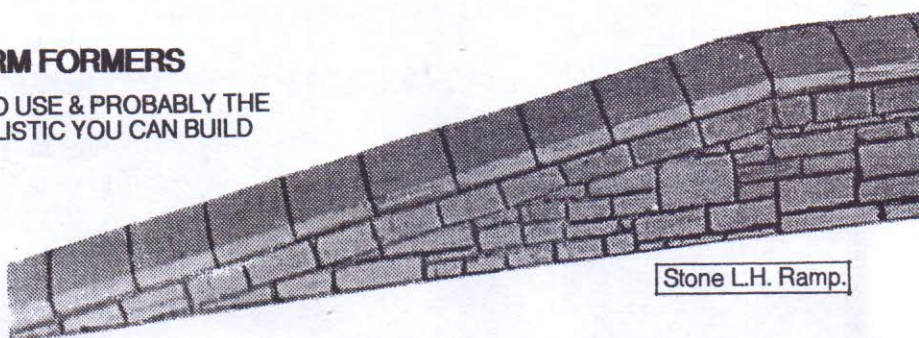
Create a rural scene with the thatched cottage.



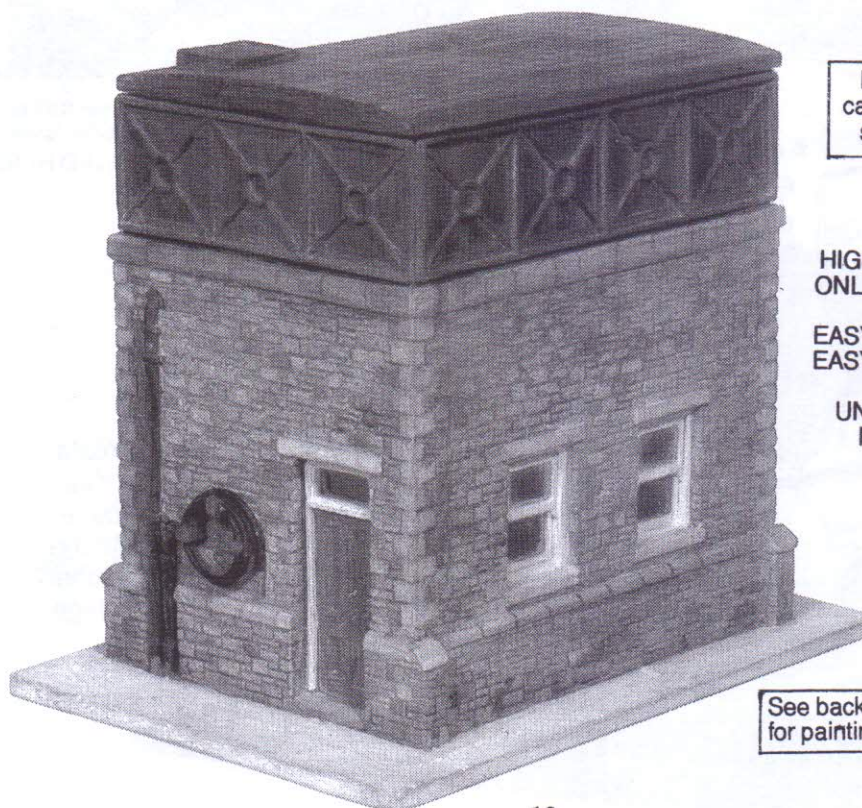
Simply glue former down
beside track & lay in
platform surface

PLATFORM FORMERS

SO EASY TO USE & PROBABLY THE
MOST REALISTIC YOU CAN BUILD



Stone L.H. Ramp.



Iron Tank side
castings available
separately

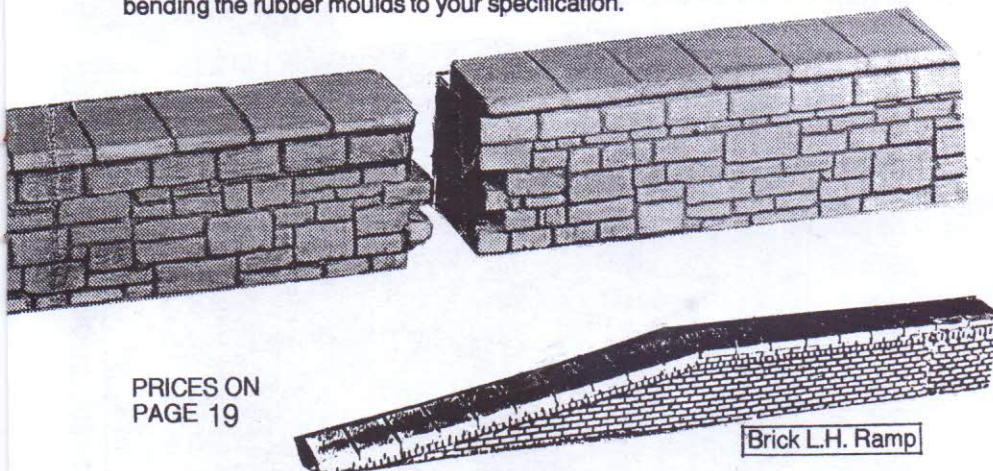
HIGHLY DETAILED
ONLY 5 CASTINGS

EASY TO COLOUR
EASY TO ASSEMBLE

UNRIVALLED
REALISM

See back page
for painting tips

Townstreet platform formers are available in brick and random dressed stone to match the station. Each casting is about 9" long with a traditional 3ft. by 2ft. paving slab for the top edge and a recess behind this to set in and support your platform surface. The castings are extremely realistic and very easy to use. Curves are made to order by bending the rubber moulds to your specification.



MODEL ARCHITECTURE AT ITS FINEST



STONE WATER TOWER

A Water Tower is an essential structure on a steam based layout. The Townstreet one has similar stonework to the Station with interlocking "quoins", (corner stones) and buttresses at the base of the wall giving a solid traditional look to the building. Doors, windows, pipework and even a coiled hose are all finely moulded into the castings while their sharp definition would have you think they were applied separately. The Iron Tank side panels are cast with the walls for easy handling and assembly and carry full rivet detail. The top cover represents wooden planking with an access hatch and the wood grain is clearly visible. There are only 5 castings for easy assembly.

Window glazing is not supplied as any thin clear re-cycled packaging is suitable. This can simply be fixed to the back of the wall casting or if a more accurate look is desired, cut to size and fitted at the correct depth in the window frames. Equally a water crane is not included allowing you to use one specific to the region or company modelled.

The Tank sides are available individually for scratch building a water tank or extending the walls on the kit. You may also dispense with the top cover if you wish to model the water in the tank. Ordered without a top cover makes a saving of £7.00. but it would be necessary to reduce the thickness of the casting at the top if this was seen. That entails a bit of filing or sandpapering down.

The Water Tower is 6½" high on a 6" X 4¾" base. Water tank panels are 140x36mm.

Stone water tower complete.....£49.50 (+£6.00.P.&P.)

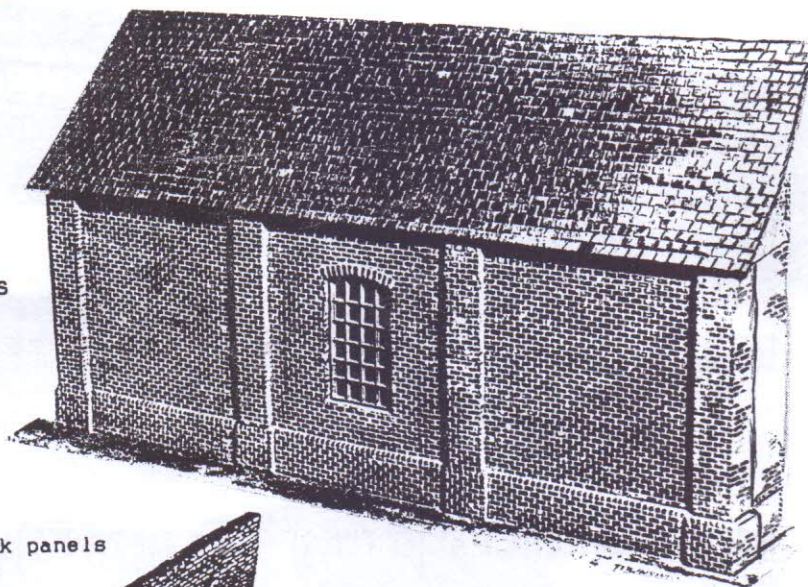
BRICK PANEL CONSTRUCTION SYSTEM

Low or half relief shed created from brick panels and pillars. Use them for sheds, factory backscenes, brick embankments or to construct complete brick buildings.

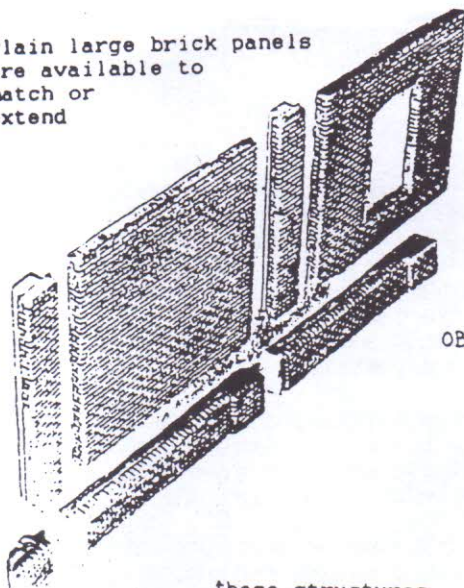
Components shown below.

PRICES
ON P. 15

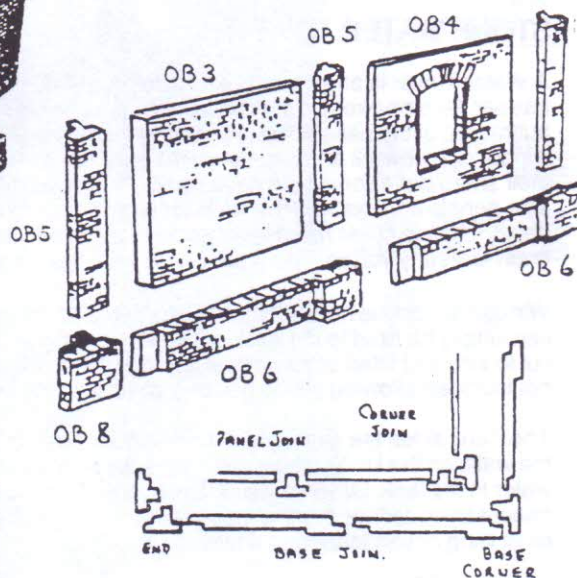
O.R.1. roof panels
also used in this
illustration.



Plain large brick panels
are available to
match or
extend



these structures
& can be supplied cut
to your plan or diagram or
with door or window aperture
moulded in (See price list)



A RESIN CAST WINDOW IS SUPPLIED WITH THE O.B.4. PANEL

STONE STATION MODULAR BUILDING RANGE

EASY TO USE
AND COLOUR
UNBEATABLE
REALISM

NO SMALL PARTS
ONLY 13 MAIN
CASTINGS.

ASSEMBLE
USING P.V.A.
WOOD GLUE

THE BASIC 2 x WING
SINGLE STOREY STATION

£76.50.



The Townstreet Station is based on a wide general survey of small to medium stone station buildings all over the country. It has been designed and developed in a modular form, as were many of the real thing to allow a variety of buildings to be assembled to suit your individual requirements. One and two storey walls and gables feature highly detailed stonework with all doors, windows, guttering and drainpipes included in the castings saving many hours in construction time.

As basically similar architecture was found in most regions a little thought will tailor your station to suit your location. The use of appropriate modules, coloured to match the stone of the area, "Company" colours on the doors and ironwork and the addition of suitable furniture and a canopy if required will create a station with the correct regional look and of course, every stone looking like a real stone.

£112.50.



The addition of
another gable
wing "H" shape

The addition of
another lengthways
wing "+" shape

£115.00.



STATION COMPONENTS SHOWING
THE INTERNAL DETAIL ON THE
LINKING WALL & THE METHOD OF
LINKING ROOFS ON THE SINGLE
STOREY

TOWNSTREET



O.S.S.1. Single storey gable with double window.....	£8.95.
O.S.S.3. Plain wall, 1 storey with gutter & downpipes.....	£5.95.
O.S.S.4. Wall, 1 storey with door & window.....	£6.95.
O.S.S.6. 1 storey link wall with interior detail.....	£7.95.
O.S.S.7. Bay window to link walls lengthways.....	£6.95.
O.S.S.8. Arched double doorway, also links walls.....	£4.95.
O.S.S.9. Chimney stack with 2 pots (flat Base).....	£2.95.
O.S.S.10. Two storey gable with windows.....	£11.95.
O.S.S.11. Two storey gable, plain.....	£9.95.
O.S.S.12. Two storey wall with gutter & downpipes.....	£8.95.
O.S.S.13. Two storey link wall with chimney breast.....	£10.95.
O.S.S.14. 2 st. wall with door & windows..avail soon.....	£12.95.
O.S.S.15. Roof "saddle" to accomodate extra chimney.....	£1.95.

**STATION
COMPONENT
PRICES**

Please add
£6.00. P & P.
per order.

O.S.R.1. Plain slate roof panel for station.....	£3.95.
O.S.R.2. Roof with flat area to fit adjoining roof.....	£3.95.
O.S.R.3. Linking roof with chimney breast.....	£3.95.
O.S.R.4. Roof to match O.S.S.13. wall.....	£3.95.
O.S.R.5. Small link roof for above bay window / door.....	£3.50.

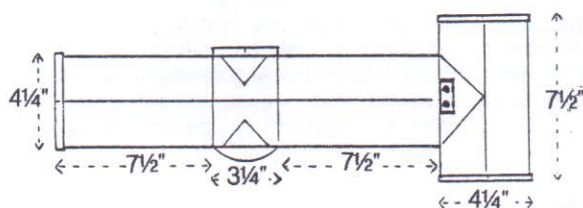
**STATION SET PRICES
SHOWN ON SKETCH
ILLUSTRATIONS OF
DIFFERENT STYLES
USE NO. TO ORDER**

**ARRANGEMENTS FOR STONE STATION CASTINGS SHOWING
STYLES OF BUILDINGS WHICH CAN BE ASSEMBLED.**

The Station castings now allow straightforward construction (no cutting)
of any of the 15 styles shown. Other versions can of course be devised
and walls can be cut and joined if necessary.



STATION SIZES CHART



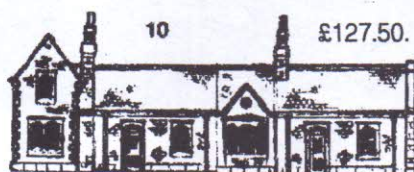
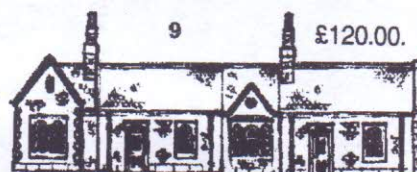
The plan shows station sizes (style 9). Add or subtract the various "box" sizes to calculate the size you need.

See P.12, to add stationmasters house to end of types 4,5,6,10,11, 13 or 15.

STATION SIZES

Station sizes are 5 1/2" to roof ridge & 9 1/2" to chimney top. Length / width as plan above.

The 2 storey unit is 7 1/4" high, to ridge, 9 1/2" to chimney.



Please add £6.00. P.&P. each order



These largest versions will be around 39" long

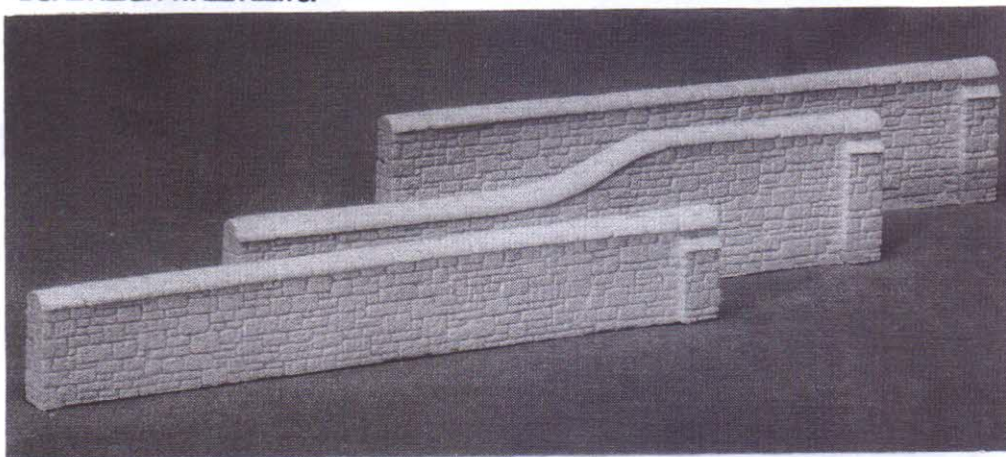
STONE WALLS

These very useful stone wall castings match the station stonework and have typical half round dressed stone top copings. Use the low one for garden or platform walling, the high one round the goods yard and the "conversion" dual height one at gateways or other special applications. The stone buttress makes both an interesting feature and serves to stop the joins being obvious. Each wall piece is 185mm. in length with the low one being 28mm. high and the high one 40mm.

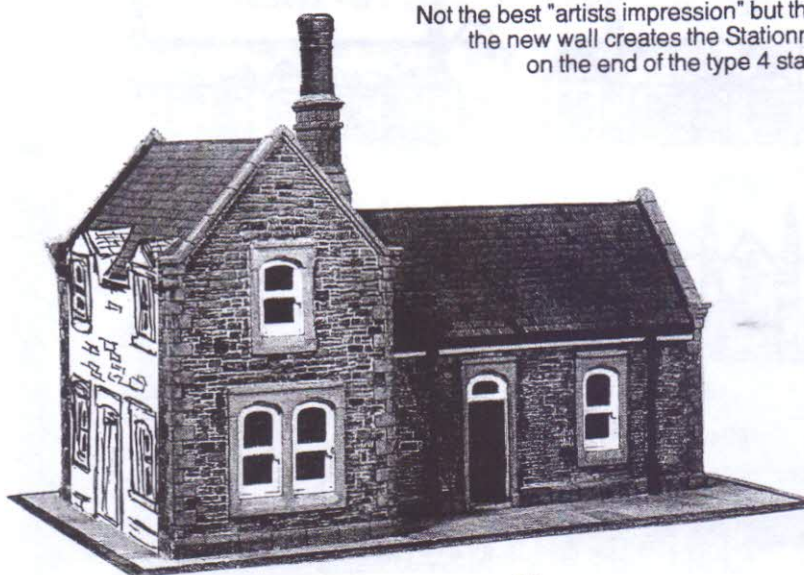
LOW WALL, each £2.50. Set of 4 £8.95.

HIGH WALL, each £2.75. Set of 4 £9.95.

DUAL HEIGHT WALL, £2.75.



Not the best "artists impression" but this is the way
the new wall creates the Stationmasters House
on the end of the type 4 station





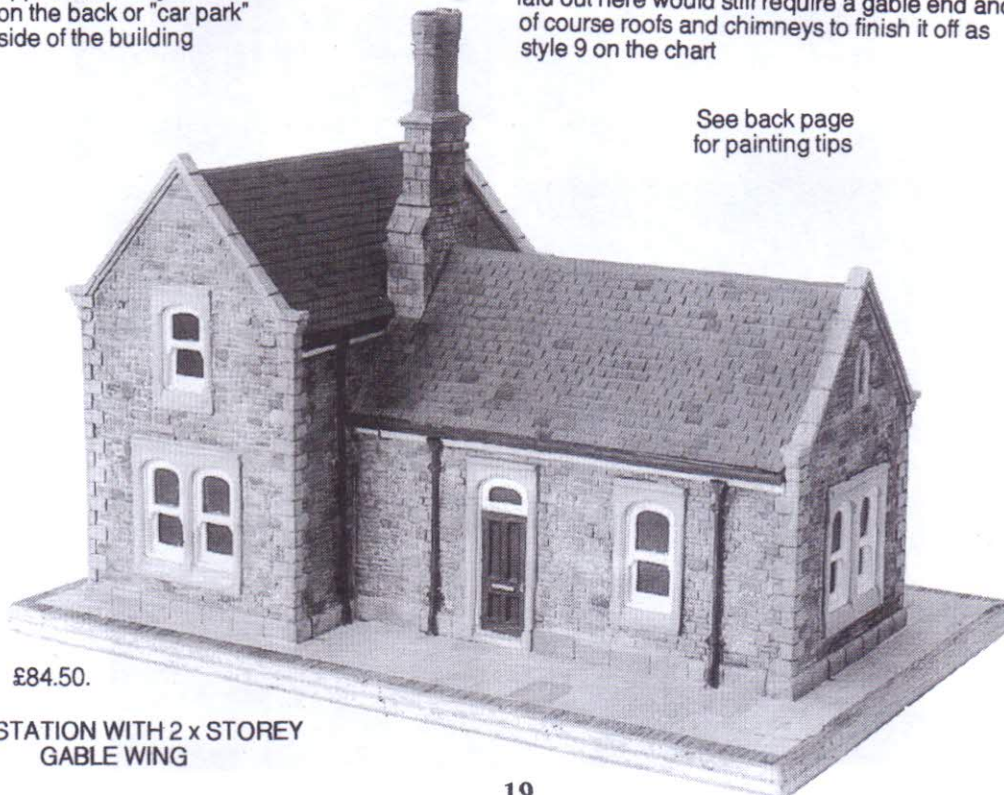
TOWNSTREET
STONE STATION
CASTINGS

The Bay Window casting links 2 x standard walls & can be used to extend the station frontage as illustrated or link two complete "T" shaped units. The arched double doorway would normally be used opposite the bay window on the back or "car park" side of the building



This illustration shows the interlocking joints on unpainted castings. The configuration laid out here would still require a gable end and of course roofs and chimneys to finish it off as style 9 on the chart

See back page
for painting tips



£84.50.

STATION WITH 2 x STOREY
GABLE WING

SIGNAL BOX

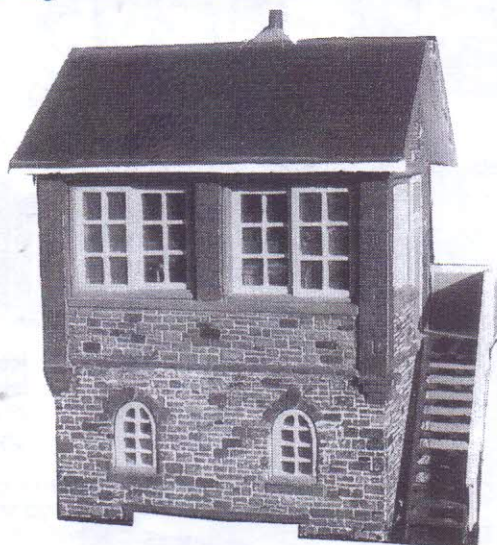
This model is based on our popular '00' gauge model which is of North Eastern origin. The model is easily assembled and comes complete with a detailed interior. There are 22 castings plus 18 signal levers.

The interior of the box can be easily lit to highlight the details.

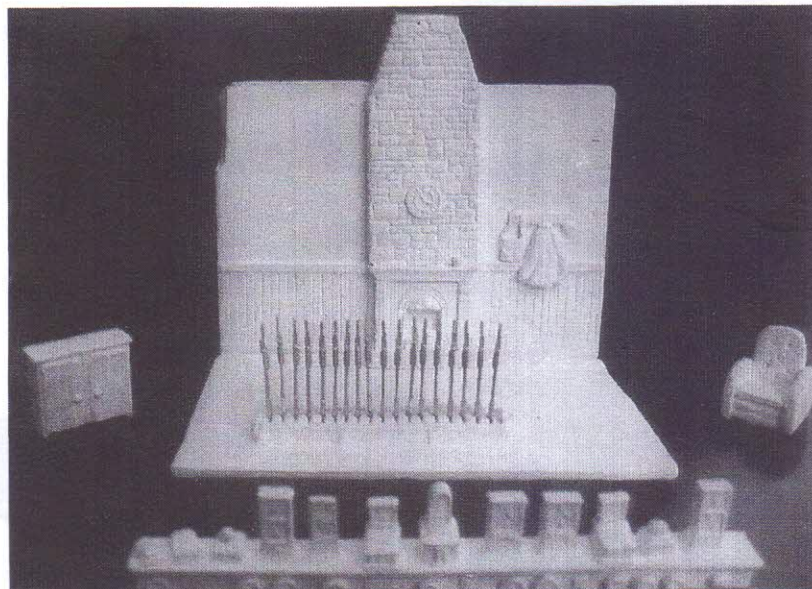
Price £75

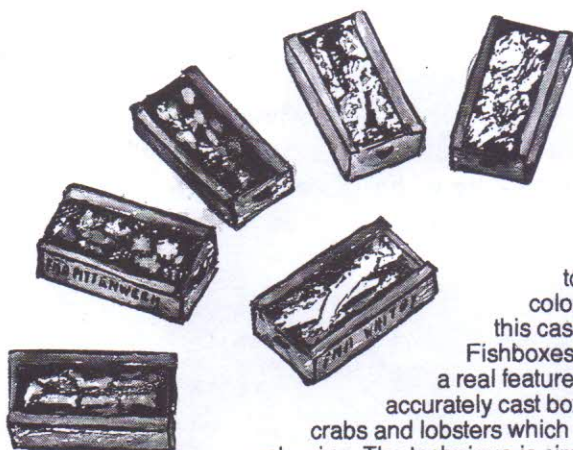
A hole is provided in the floor casting to facilitate this and save the need for drilling.

The base of the signal box measures 135 mm long by 95 mm wide and the height to the roof ridge tiles is 185 mm



The detailed interior includes a set of 18 levers, an instrument panel, desk, armchair and finely detailed back wall.





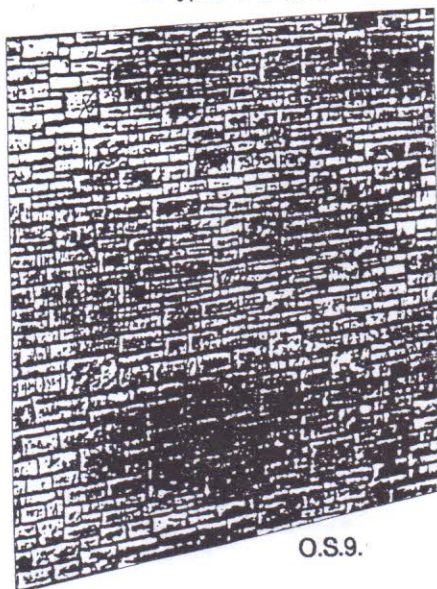
FISHBOXES

Traditionally many fine detail products have been available in metal and plastic but many of us do not have the ability to paint them as well as they deserve. For many less artistic modellers the use of Chrystacast in the Townstreet range has enabled them to achieve a higher degree of realism as it colours so readily. This is particularly useful in this case and it means that your traditional wooden Fishboxes, with fish in can look very authentic and be a real feature of your dock scene or fish train. The accurately cast boxes contain representations of different fish, crabs and lobsters which will be quite recognisable with sympathetic colouring. The technique is simple. Mix up a very thin black wash, water or matt enamel in a small dish and dump the boxes in to get rid of any "white" look forever. When dry brush on a wood colour for the box and just touch the fish with a white/grey/silver colour to make them stand out from the depths of the box. Crabs and lobsters need orange/brown and blue/grey colours respectively.

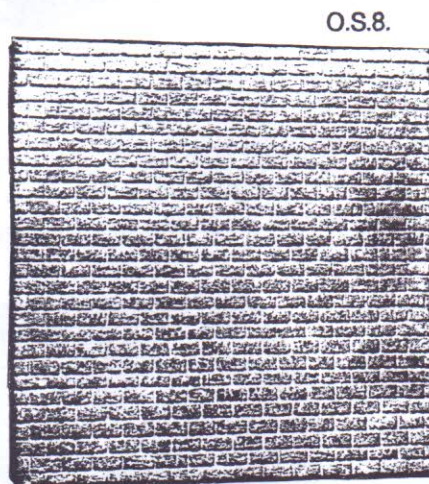
Set of six, filled fishboxes.....£6.95.
Stack of empty fishboxes.....£3.95.
£1.00. postage is sufficient if fishboxes are ordered on their own.

STONE/BRICK PANELS

Stone panels accurately textured for realistic structures.
Three types available.



O.S.9.



O.S.8.

Build real stone buildings, walls & embankments with these panels.

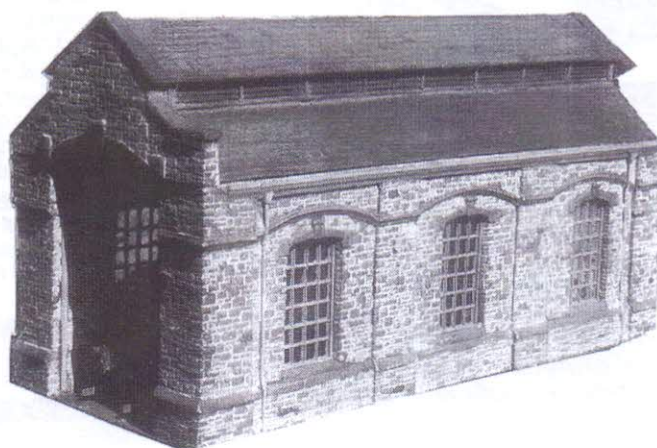
BRICK O.B.9. & LARGE STONE O.S.7. TO MATCH
STONE HOUSEFRONT NOT ILLUSTRATED

Stone panels can be supplied cut to your plan or diagram or with door or window aperture moulded in (See price list)

SINGLE ROAD ENGINE SHED

The stone single road engine shed is typical of many branch line or country junction sheds. It can be modeled as a through road or dead end shed and its measurements are width 143 mm, length 360 mm and maximum height 181 mm.

Price £77



GOODS SHED

The stone goods shed has been developed from the stone 2 road engine shed. The base measures 360 mm long by 240 mm wide and the maximum height is 205 mm.



Price £89



MODEL ARCHITECTURE AT ITS FINEST

SCRATCH BUILDING MADE EASY BY TOWNSTREET

Why spend hours carving stones or sticking on slates when we can apply these textures for you.

For lightness and ease of construction we can apply stone texture to plywood panels supplied by you. If supplied pre-cut with window apertures etc. no further cutting of stonework will be needed.

Please phone for details.

Price. stone texture applied to a panel up to 5½" x 11½".....£12.00.

PRICE LIST

- O.B.1. Starter pack. 23" (scale 95ft.) engine shed, warehouse or factory side, or low relief frontage. 3 plain panels, 2 with windows with all buttresses and bases to complete one side.....£26.50.
- O.B.2. Full shed walls set. Double above plus brickwork for rear wall & gables.....£59.50.
- O.B.3. Plain brick panel, 100mm. (scale 14ft. sq.) for many uses.....£2.25.
- O.B.4. Same with arched window aperture & resin window supplied.....£3.25.
- O.B.5. Vertical joining pillar representing scale 2'6" brick wall buttress.....£1.00.
- O.B.6. Brick wall base section. 3ft. high, supports both panel and pillar.....£1.50.
- O.B.7. Corner pillar. Has "thin" edge to make corner with std. pillar.....£2.25.
- O.B.8. Base end or cornerpiece.....£0.90.
- O.B.9. Large square brick panel. 145mm. = scale 20ft. For general use.....£3.25.
- O.B.10. Item 6 supplied as 3ft. high walling, brick detail 1 side only.....£1.50.
- O.B.11. Item 9 supplied cut/shaped to plan for house fronts, bridge sides etc.....£5.95.
- O.B.12. Brick Platform Set, 6 piece 4'6" long incl. ramps. Makes 1 side only.....£22.50.
- O.B.13. Brick Platform Former, single 9" section to extend set.....£3.95.
- O.B.14.R. & L. Right and left matching ramps. 9" long with 5" sloping ramp.....£3.75.
- O.B.15. Brick housefront, cast in 1 piece with solid (paint black) windows.....£7.95.
- O.B.16. Brick housefront with window apertures to be glazed.....£9.95.
- O.B.17. Brick chimney stack with 2 pots.....£3.95.
- O.B.18. Bay window, as solid casting suitable only for O.B.15.....£5.95.
- For curved platforms please add 10% to price of standard item.
- O.S.1. Stone housefront, ground floor section.....£6.95.
- O.S.2. Stone housefront, upper two floors section.....£7.95.
- O.S.7. Stone panel, 145mm sq. matches stone housefront for gables etc.....£3.25.
- O.S.8. Stone Panel. 145mm. regular dressed stone block (smaller than O.S.7).....£3.25.
- O.S.9. Stone panel. 145mm. random cut stone to match bridge / tunnel.....£3.25.
- O.S.12. Stone Platform Set, 6 piece 4'6" long incl. ramps. 1 side only.....£22.50.
- O.S.13. Stone Platform Former, single 9" section to extend set.....£3.95.
- O.S.14.R & L. matching ramps, 9" long with 5" sloping ramp.....£3.75.
- O.R.1. Roof panel, 145mm.sq. in absolutely realistic slates for general use.....£3.25.
- O.T.1. Iron water tank side, 140x36mm. four segment (illustr. on water tower).....£6.95.

PLEASE ADD £6.00. POST & PACKING TO EACH ORDER. (UK.)

International orders at cost of Airmail.